



## Tower House, 58B High Street, Uxbridge, UB8 1GF

- One bedroom apartment
- Available end of March 2026
- Well furnished
- Students are welcome
- Large balcony space
- Town centre location
- Top floor apartment
- EPC Rating - C
- Lift access
- High Street location

**£1,450 PCM**

Cameron Estate Agents  
195 High Street,  
Middlesex, Uxbridge, UB8 1LB

E: [uxbridge@cameron.co](mailto:uxbridge@cameron.co)  
T: 01895252000

[www.cameron.co](http://www.cameron.co)



Whilst every care has been taken to ensure the accuracy of these particulars, none of the statements contained herein are to be relied upon as representations of fact. These particulars do not constitute an offer or contract.

**Description**

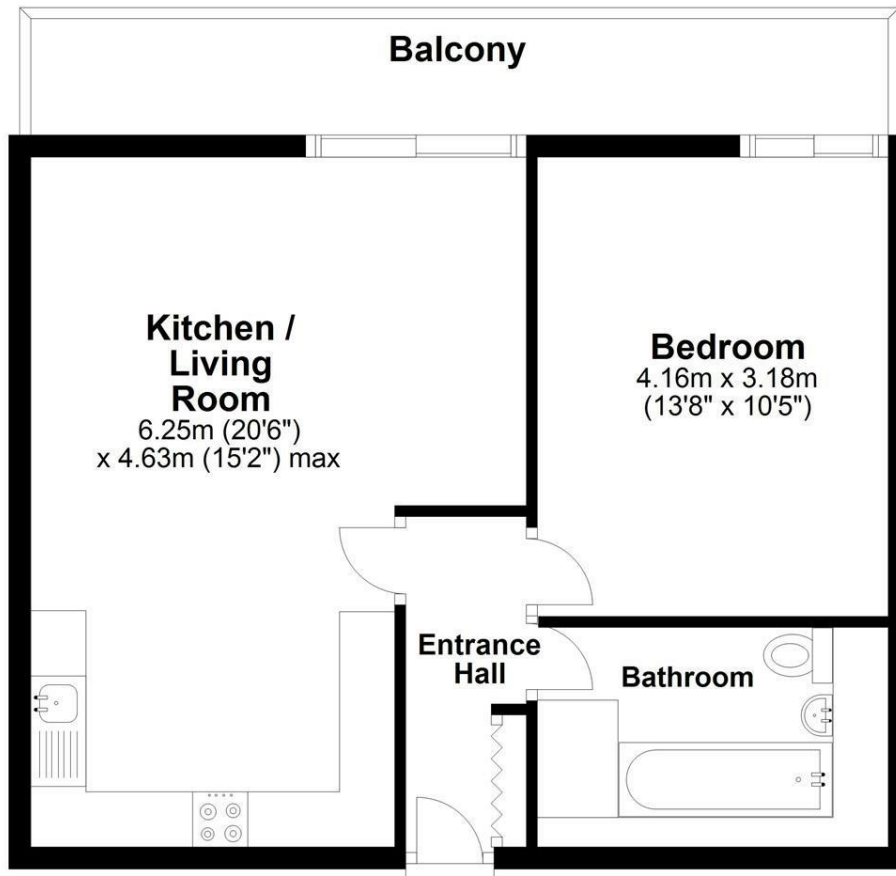
Cameron present this one bedroom apartment in the High Street in a popular development. This top floor apartment offers a large balcony with direct access from the reception and bedroom, a luxury open plan kitchen with integrated appliances including a slim line dishwasher, washer dryer, cooker and tall standing fridge freezer, stone work tops and ample storage. Wood laminate to the reception, double bedroom with fitted wardrobes and a luxury bathroom. Step out onto the High Street with transport links within arms length and enjoy the many shopping facilities Uxbridge has to offer. Available for end of March 2026, and presented furnished.

**IMPORTANT NOTICE**

These particulars have been prepared upon information supplied by the Vendor and should be verified by your surveyors and solicitors. In accordance with the Property Misdescriptions Act 1991 we have prepared these sales particulars as a general guide to give a broad description of the property. They are not intended to constitute part of an offer or contract. We have not carried out a structural survey and the services, appliances and specific fittings have not been tested. All photographs, measurements, floor plans and distances referred to are given as a guide only and should not be relied upon for the purchase of carpets or any other fixtures or fittings. Lease details service charge and ground rent (where applicable) are given as a guide only and should be checked and confirmed by your solicitor prior to exchange of contract

## Sixth Floor

Approx. 49.4 sq. metres (532.1 sq. feet)





# Cameron



Whilst every care has been taken to ensure the accuracy of these particulars, none of the statements contained herein are to be relied upon as representations of fact. These particulars do not constitute an offer or contract.